

## LOUIS C. BIERWEILER — AN APPRECIATION

THE death of Louis C. Bierweiler on December 12, 1964 ended a unique career of 63 years of dedicated service to the Botanical Museum and to Harvard University.

The career began in 1901 when "Louie," as he was affectionately known to a host of friends, became personal assistant, at the age of fifteen, to Professor George Lincoln Goodale, founder and first Director of the Museum. He soon made himself an indispensable part of the Museum. There was almost nothing which he could not do.

After Professor Goodale's death, Louis became assistant to Professor Ames, who was responsible for recommending him for a corporation appointment as Curator. When I came to the Museum in 1940, first as Assistant Director and then later Director, I found Louis ready and willing to serve as my right hand, and I soon realized that, though Directors might come and go, the Museum would always be looked after and cared for so long as Louis was on the job.

Known to the public as "Mr. Glass Flowers," Louis, next to the Blaschkas, father and son, who created them, was responsible for making them Harvard's most popular scientific exhibit. He made the plaques on which they were mounted, the supports which reduced vibration and breakage. After he took charge, no other person ever touched his beloved "Flowers." His skill in handling them was remarkable, and his hands remained steady until the illness which preceded his death.

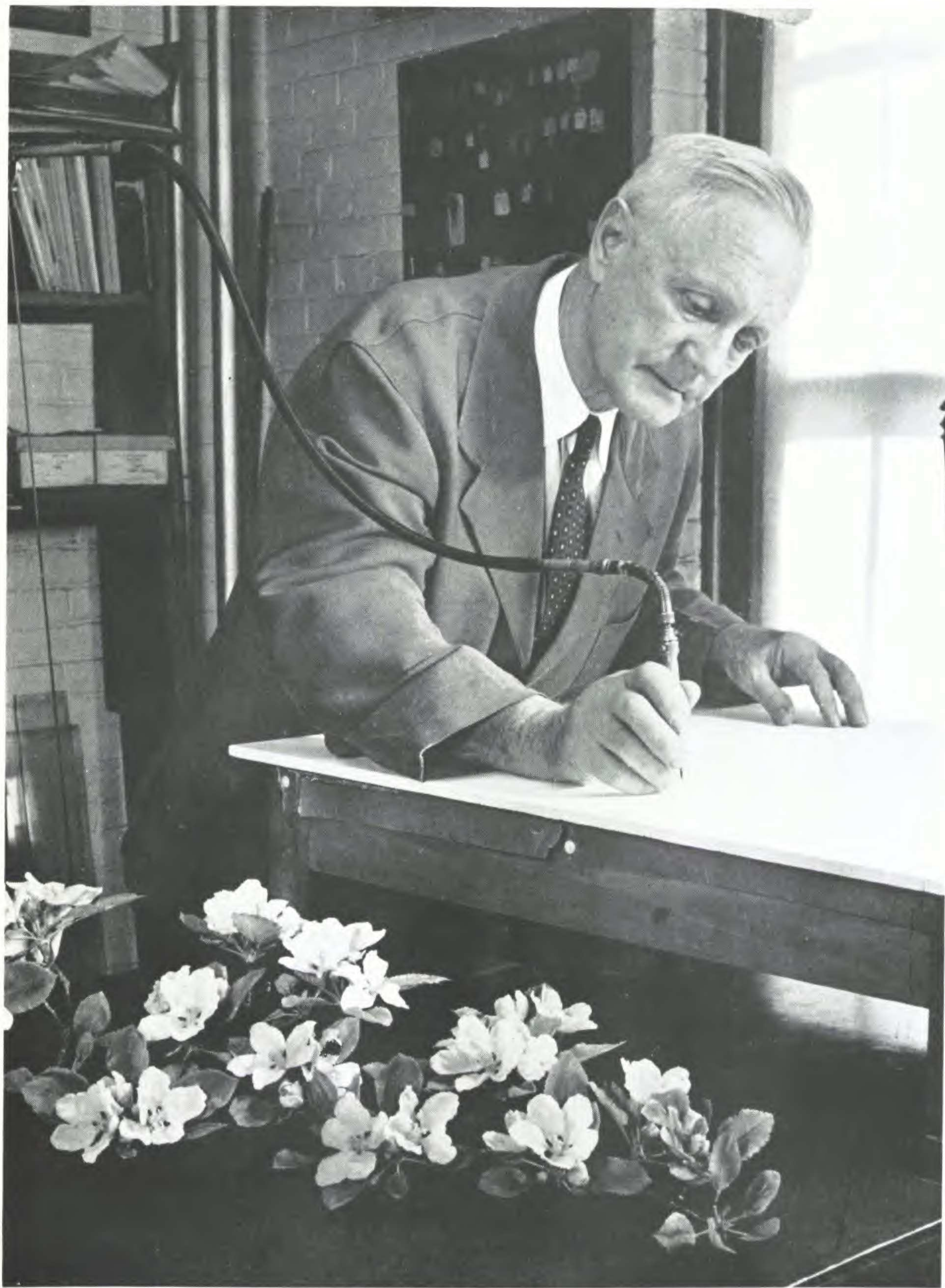
Although officially "retired" in 1957, Louis continued to come to the Museum daily until a few weeks before his death. Indeed, he would have been quite unhappy had he not been able to continue to serve the institution to which he was so completely dedicated.

His service to the Botanical Museum and to Harvard University is epitomized in an excerpt from an engrossed citation presented to him in May 1951 on the occasion of the completion of fifty years of service:

Steadfast in the performance of his many duties, constantly vigilant in guarding the interests of the University, always ready to lend effective help to others, he has endeared himself to successive generations of her faculty and students. . . .

—PAUL C. MANGELSDORF

PLATE LII



LOUIS C. BIERWEILER  
1887-1964